



LEGISLATIVE AGENDA 2022

prepared by the:

**BROKEN
ARROW**
CHAMBER of
COMMERCE

A Message from the President

Members,

This Legislative Agenda is created through the leadership and guidance of our Government Affairs Committee, Business Advocacy Council, and our Chamber Board of Directors, led by conversations with our membership throughout the year. Additionally, the Broken Arrow Chamber supports and participates in the Tulsa Regional OneVoice Agenda process. We operate strongly as a region but recognize there are specific needs or differences that the Broken Arrow Chamber may have. This agenda has been reviewed and adopted by the Broken Arrow Chamber of Commerce Board of Directors as a representation of our members.



We are blessed to live in a pro-business state with leadership at all levels that recognizes the importance of a strong economy that is led by the business community. This agenda reflects items, that if addressed, will keep Oklahoma on the path of economic growth and prosperity. The BA Chamber recognizes that to have a strong business environment, the critical infrastructure must be addressed in the areas of healthcare, education, transportation, energy, and economic incentives. Your feedback as a chamber member is welcomed and appreciated as we work hard to represent our members on the local, state and federal levels year-round.

Sincerely,

Jennifer Conway
President & CEO



Lauren Smith
2021 Chairwoman of the Board



Aaron Morris
2022 Chairman of the Board

GET INVOLVED!

For more information on the Legislative Agenda or if you would like to participate in advocacy events or committees, please contact Lori Lewis at lori.lewis@bachamber.com.

2022 LEGISLATIVE DEADLINES

58th Legislature, 2nd Regular Session

12/10 Bill Request Deadlines

1/20 Bill Introduction Deadline

2/7 Second Regular Session of the 58th Oklahoma Legislature convenes

3/17 Third Reading in House of Origin Deadline

4/28 Third Reading in Opposite House Deadline

5/27 Sine Die Adjournment (No later than 5:00 p.m.)

Broken Arrow
OKLAHOMA

fourth largest city in Oklahoma

300 + *manufacturing*
companies in Broken Arrow

population of **114,212**

Voted *happiest* city in Oklahoma

Workforce

Workforce Development: The number one challenge facing the business community is the lack of skilled workforce at all levels. Without access to the employees they need, many businesses are being held back in achieving the growth in their markets that is available to them. The business community must partner with education and government to ensure a pipeline is established to build the workforce for today and tomorrow.

Medical Marijuana & Employer Drug Testing (State): The BA Chamber supports legislation and enforcement of marijuana related laws, employee drug testing, and employer action, especially in safety related occupations. The rights of the employer to provide a safe workplace must be protected.

Study of Oklahoma Minimum Wage Rate (State): Oklahoma's current Minimum Wage is \$7.25 per hour, which is equal to the federal minimum wage. It has been over a decade since Oklahoma has seen an increase to the minimum wage schedule. We believe a push for a Federal minimum wage of \$15 an hour would be detrimental to many small businesses in Oklahoma, however, we encourage a study to ensure that Oklahoma remains competitive in not only attracting businesses but also in attracting the labor necessary to meet the needs of our business growth. We support legislation to recommend a study of the Oklahoma minimum wage rate to determine if increases are warranted and determine impact to employers and employees in our State and make recommendations.



Internships and Apprenticeships (State): The Broken Arrow Chamber supports the State of Oklahoma efforts to obtain federal funding and create participatory incentives for the greater establishment of internships and apprenticeships in high demand occupations.

Accessible Childcare (State): As highlighted during the COVID-19 pandemic, access to safe childcare is a critical component of the economic engine. We support incentives and protection to mitigate risk for employers to encourage establishment of onsite childcare. We also support incentives for employers who offer access to childcare for workers making less than the MSA average per capita annually. This would include special incentives to existing child care facilities to re-open safely by giving preference to those who make modifications enabling them to offer their prior capacity or more of children served daily. An evaluation of the existing childcare supplement program income thresholds also needs to take place.

Sponsored by



Education

Education: A strong education system in Oklahoma is the essential foundation to equip the workforce for tomorrow and to attract and retain residents and businesses to Broken Arrow. An investment in education is an investment in our workforce, which in turn is an investment in our businesses.

Oklahoma's Education Funding (State): An exceptional education system provides leverage for Oklahoma by creating a competitively equipped and educated workforce, attracting new business, and ensuring that current businesses have the talent to thrive. To accomplish this, the state must:

- Create and maintain a five-year, sustainable strategic funding plan so both the State of Oklahoma and its students have a competitive advantage.
- Modernizing funding formulas to ensure equity of opportunity for students and maximum effectiveness of funds for our state.
- Distribute public education funds using an equitable and consistent method to support common, CareerTech and higher education to enhance Oklahoma's educational pipeline.

Allow Increased Local Funding of Education (State): The BA Chamber supports legislation providing municipalities with the ability to supplement state education funding and target the unique priorities of their community.

Expand Concurrent Enrollment (State): The BA Chamber supports fully funding access for seniors in support of current law and expanding access and fully funding concurrent enrollment for high school juniors.

- They reduce the amount of time it takes to complete a degree at a post-secondary institution
- This means it also reduces cost and speed of entry to the workforce

Explore Four Year Public University Expansion in Tulsa Region (State): The BA Chamber supports to expand first and second year coursework for concurrent high school students and high school graduate residents to obtain a four-year degree from a public university in the Tulsa region to ensure we are keeping our talent here as they move from education to the workforce.

STEM Degrees (State): Given the growing base of our community's manufacturing, high tech, aerospace, and related industries, there is a need for additional college graduates in science, technology, engineering, and mathematics (STEM) areas. We support the efforts of Northeastern State University to develop new and expanded degrees in engineering and related, high-demand STEM fields.



Transportation

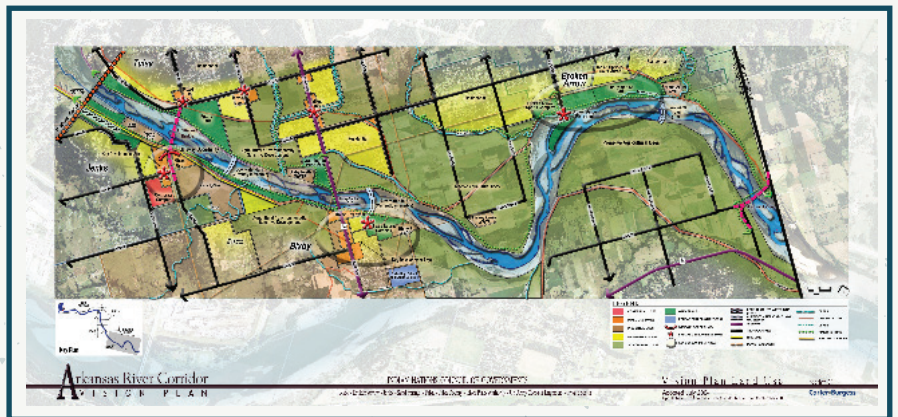
Transportation: With transportation needs being an important economic driver in our state, we support continued improvements and investment in our infrastructure, which will ensure Oklahoma remains competitive in attracting new businesses.

Enhanced Turnpike Access (Federal and State): The BA Chamber supports the collaborative effort underway among Broken Arrow, Coweta, Wagoner County, Oklahoma Turnpike Authority, and Oklahoma Department of Transportation to develop and implement a funding strategy to add turnpike access and adjacent roadway improvements. Specifically, we like to see a direct access for the Armed Forces Reserve Center.

Fully Fund State and County Road Plans (State): To ensure continued improvement to our roads, bridges and return our streets and highways to a state of good repair, the BA Chamber supports fully funding the Oklahoma Department of Transportation's Eight Year Plan and raising the funding cap on the County Improvement for Roads and Bridges Five Year Plan. The need to support needed transportation improvements may require an update or identification of alternative funding mechanisms.

Improve Heavy Load Routes (State): In order to meet the needs of manufacturers in Broken Arrow, the Chamber will continue to engage with the Department of Transportation to ensure viable and safe heavy load routes are evaluated throughout northeastern Oklahoma.

Expedite Arkansas River Corridor Development and Levees (Federal): Given the impact of flooding in our regions, the BA Chamber believes it is imperative to continue to address the critical infrastructure needs with Tulsa's aging levee system.



Healthcare

Stronger Health Care: A strong health care system is vital to economic growth. The healthcare industry not only provides jobs resulting in a positive economic impact, but quality healthcare is key to attract and retain residents and new business.

Single Payer Health Care (Federal): BA Chamber opposes a single-payer government-run/public option or health care system with government mandates.

More Employer Driven Market Reforms (Federal): The BA Chamber supports market-driven health reforms as they have proven to be the best approach to reducing costs while promoting market stability, efficiency, wellness and quality of care.

Federal Health Care Reform (Federal): The BA Chamber encourages Congress to refrain from making any changes to the structure and financing of Medicaid that would lead to an increase in Oklahoma's uninsured rate and transfer federal risk and costs to Oklahoma taxpayers. They should remain open to innovations that decrease employer-sponsored and individual health insurance costs.

Economy & Taxes

Oklahoma has an economy that continues to be ripe for growth - responsive government, low taxes, and affordable cost of living are key factors that provide an environment for business to grow and expand their workforce. The BACC encourages state and local governments to protect the economic environment so our businesses can continue to thrive.

Support Funding for Critical Economic Development Programs (Federal): The BA Chamber supports continued investment in targeted federal economic development funding for programs that have proven to be effective and beneficial to the Tulsa Region.

Expedite Arkansas River Corridor Development (Federal): The BA Chamber supports efforts to expedite the implementation of the Arkansas River Corridor Project for river infrastructure improvements, as our ports are a key economic driver.

Extend American Indian Lands Tax Credit (Federal): The BA Chamber supports the long-term extension of the Federal American Indian Lands Tax Credit.

- The American Indian Lands Tax Credit is a key economic development tool for Oklahoma, allowing both the accelerated depreciation of investments made on former reservation land, and employment tax credits when employing tribal members or their spouses.
- Oklahoma has the largest percentage of American Indian population in the country, and more than two-thirds of the state qualifies for this incentive.

Increase Economic Incentives (State): The BA Chamber supports continued tax credits, exemptions, and incentives that provide an economic return to the state of Oklahoma, which will maintain our competitiveness in business attraction and retention, and increase capital investment. The incentives which are critical to our states competitiveness include:

- Historic Rehabilitation Tax Credit
- All Quality Jobs Programs
- Quality Events Program
- Film Enhancement Rebate
- Automotive Engineering Tax Credit
- Small Business Incubator Tenant Credit
- Oklahoma Seed Capital Fund
- Opportunity Zones
- 5-Year Manufacturing Ad Valorem Exemption
- Aerospace Engineering Tax Credit
- Manufacturers Sales Tax Permit Exemption

Modernizing Oklahoma's Alcohol Laws (State): The BA Chamber supports continued legislation that reforms Oklahoma's outdated alcohol laws with a focus on easing legal and regulatory burdens on restaurants, bars, event and sports venues, festivals, and other public events resulting from the elimination of low-point beer and the implementation of Oklahoma's new alcohol laws (Title 37A) in October 2018.

Develop a Manufacturing Innovation Hub (State): BA Chamber supports changes to enable the Oklahoma Economic Development Pooled Finance program to fund the construction of a public-private partnered manufacturing innovation facility in NE Oklahoma. By providing shared resources to improve private manufacturing technologies and build out local supply chains, this facility would serve as a workforce center of excellence an asset to retain and attract manufacturers to the region.



Mitigate negative business and economic impact from the Supreme Court McGirt Decision (Federal):

BA Chamber encourages the continued assessment regarding the unintended negative impact of the Supreme Court's ruling in McGirt v. Oklahoma. It is imperative that the legal questions and clarifying legislation is implemented to ensure businesses are not negatively affected to mitigate dramatic economic impact for our state and region.

Manufacturing Sales Tax Exemption Permit (State): The BA Chamber is in favor of removing barriers for manufactures to utilize the Manufacturing Sales Tax Exemption Permit ensuring all qualifying companies have access to the credit.

Strengthen our Startup Ecosystem (State): The BA Chamber supports the creation of targeted incentive programs that will foster the growth of NE Oklahoma's entrepreneurial ecosystem. Oklahoma ranks 47th in venture capital expenditure, falling well behind our peers. Adopting a successful model employed in many other states, the legislature should incentivize investment in Oklahoma angel networks. In addition to improving access to capital, efforts should also be made to improve the incentives available to startup, early-stage and small companies by creating targeted new credits & deductions or amending existing programs. This is vital as BA develops the Innovation District.

Energy

Oklahoma is a major crude oil and natural gas producing state; almost two and a half times as much energy is produced in the state as is consumed there. Oklahoma exports the energy it doesn't use out of state, primarily as natural gas, petroleum, and electricity. All sources of energy are key economic drivers for Broken Arrow and all of Oklahoma. Protecting the rights of all energy sources, existing and emerging, and providing opportunity for continued expansion on the state and federal level is crucial for the health of the Oklahoma economy.

Eliminate Barriers to Greater Use of Natural Gas (Federal): The BA Chamber supports measures to reduce or eliminate barriers to greater use of American-produced natural gas, including CNG, LNG, GTL, and NGLs.

- Oklahoma is the 3rd largest producer of natural gas in the United States
- DOE action on this initiative has the potential to significantly increase our region's job creation in the production and manufacturing sectors

Promote Robust Energy (State): The BA Chamber supports protecting the vital economic impact and preserving our position as a leading energy producing state by supporting Oklahoma energy policy that provides a clear and reasonable regulator environment while opposing unnecessary and burdensome regulations and taxes.



Legislative Directory

CITY

Mayor Debra Wimpee, Ward 1
dwimpee@brokenarrowok.gov

Vice-Mayor Christi Gillespie, Ward 3
cgillespie@brokenarrowok.gov

City Manager Michael Spurgeon
mspurgeon@brokenarrowok.gov

Councilor Scott Eudey, Ward 4
seudey@brokenarrowok.gov

Councilmember Lisa Ford, Ward 2
lford@brokenarrowok.gov

Councilor Johnnie Parks, At-Large
jparks@brokenarrowok.gov

COUNTY

District 1, Tulsa County Commissioner
Stan Sallee
ssallee@tulsacounty.org
(918) 596-5021

District 2, Tulsa County Commissioner
Karen Keith
kkeith@tulsacounty.org
(918) 596-5016

District 3, Tulsa County Commissioner
Ron Peters
rpeters@tulsacounty.org
(918) 596-5010

District 1 Wagoner
County Commissioner
James Hanning
wagcnty3@windstream.net
(918) 357-1927

District 2 Wagoner
County Commissioner
Chris Edwards
wagcodist2@windstream.net
(918) 485-4549

District 3 Wagoner
County Commissioner
Tim Kelley
wagco3@windstream.net
(918) 486-2132

STATE

Governor - Kevin Stitt
governor.ok.gov

Lt. Governor - Matt Pinnell
ok.gov/ltgovpinnell/

Senator - John Haste
john.haste@oksenate.gov
(405) 521-5602

Senator Joe Newhouse
joe.newhouse@oksenate.gov
(405) 521-5675

Senator Kim David
kim.david@oksenate.gov
(405) 521-5590

Senator Nathan Dahm
nathan.dahm@oksenate.gov
(405) 521-5551

Representative TJ Marti
tj.marti@okhouse.gov
(405) 557-7356

Representative Ross Ford
ross.ford@okhouse.gov
(405) 557-7347

Representative Stan May
stan.may@okhouse.gov
(405) 557-7338

Representative Dean Davis
dean.davis@okhouse.gov
(405) 557-7362

Representative Scott Fetgatter
scott.fetgatter@okhouse.gov
(405) 557-7373

Representative Kevin McDugle
kevin.mcdugle@okhouse.gov
(405) 557-7388

Representative Jeff Boatman
jeff.boatman@okhouse.gov
(405) 557-7341

FEDERAL

Senator Jim Inhofe
(202) 224-4721

Senator James Lankford
(202) 224-5754

Representative Kevin Hern
(202) 225-2211