



BROKEN  ARROW
CHAMBER of COMMERCE

GUIDE TO ADVOCACY
2024

HELPFUL LINKS

- Governor Kevin Stitt - gov.ok.gov
- State Senate - oksenate.gov
- House of Representatives - okhouse.gov
- Bill Search - oklegislature.gov/basicsearchform.aspx
- Legislative Electronic Notification Service: oklegislature.gov/EBillTrack/Logon2.aspx
- Find Your Legislator - oklegislature.gov/FindMyLegislature.aspx



Broken Arrow Chamber Advocacy Contact

JOSH DRISKELL, IOM

Vice President of Operations and Government Affairs

josh.driskell@bachamber.com

(c) 918.740.4696

(o) 918.893.2112

BUSINESS ADVOCACY CHAMPIONS



BUSINESS ADVOCACY PARTNERS



BUSINESS ADVOCACY SUPPORTERS

VISITING THE CAPITOL

Visiting legislators at the State Capitol at 23rd and Lincoln is an effective way to advocate on behalf of businesses and for Broken Arrow. This portion of our guide will help you plan your visit and maximize your time.

BEFORE ARRIVING

Before you arrive at the capitol, it is important to know why you're visiting. Are you going to advocate for a specific bill? Are you going to advocate in general for pro-business legislation? Are you going to introduce yourself to legislators? Regardless of your purpose, know why you're attending. It's also helpful to set up meetings with your legislators and to confirm they will be at the capitol. Know there are some occasions in which there isn't much time for legislators (bill deadlines, budget negotiations, etc.) to meet with constituents. You can reach out to each legislator's legislative assistant to schedule time. If they're not in the office, you may also request they step off the floor to meet briefly with you by visiting the front desk at the entrance of both chambers on the fourth floor.

ARRIVAL

When you arrive at the capitol, dress professionally (suit and tie aren't necessary, but professional attire is strongly recommended). Many also recommend dressing in a manner in which you feel confident and comfortable. Be sure your shoes are comfortable as there is a lot of walking. While there are elevators to get from floor to floor, it is often faster to use the staircases located on each level. When you arrive, you can park in any non-assigned space south of the capitol or east of the capitol (access off of 23rd St. or 21st St.) and use the tunnel to enter the capitol. You will go through a quick screen process before being able to access the building. There are maps that can assist you in find you once inside the building.



VISITING THE CAPITOL

NAVIGATING THE CAPITOL

The capitol has five floors and a basement. If you enter from the east parking lot, you'll enter the basement from the tunnel. If you enter from the south parking lot, you'll come in on the south side of the building (visitor entrance is just east of the large staircase) on the First floor. Once inside, you can see the seal at the center of the building's First floor. Floors 2-5 will have a rotunda to look down on the seal or look up to the top of the dome. Legislator offices are on floors 3-5. The House and Senate galleries that allow you to watch floor activity can be accessed off the Fifth floor. Offices located down hallways have directories to indicate who is in each hallway. House offices are located on the west side of the building; Senate on the east.



Enoch Kelly Haney, a former State Senator from Seminole and member of the Seminole Nation of Oklahoma sculpted the 17-foot tall (22' with the staff) statue "The Guardian" that stands atop the Capitol. Inside the rotunda, visitors can view a nine-foot replica of "The Guardian".



STATE CAPITOL FACTS

- Was constructed between 1914 and 1917 without a dome. World War I broke out and led to budget shortfalls and material shortages
- The dome that now sits atop the capitol was completed in 2002, funded by public and private entities
- Construction cost \$1.5 million at the time (the dome would have cost an additional \$250,000 at the time. It cost \$21 million in 2002)

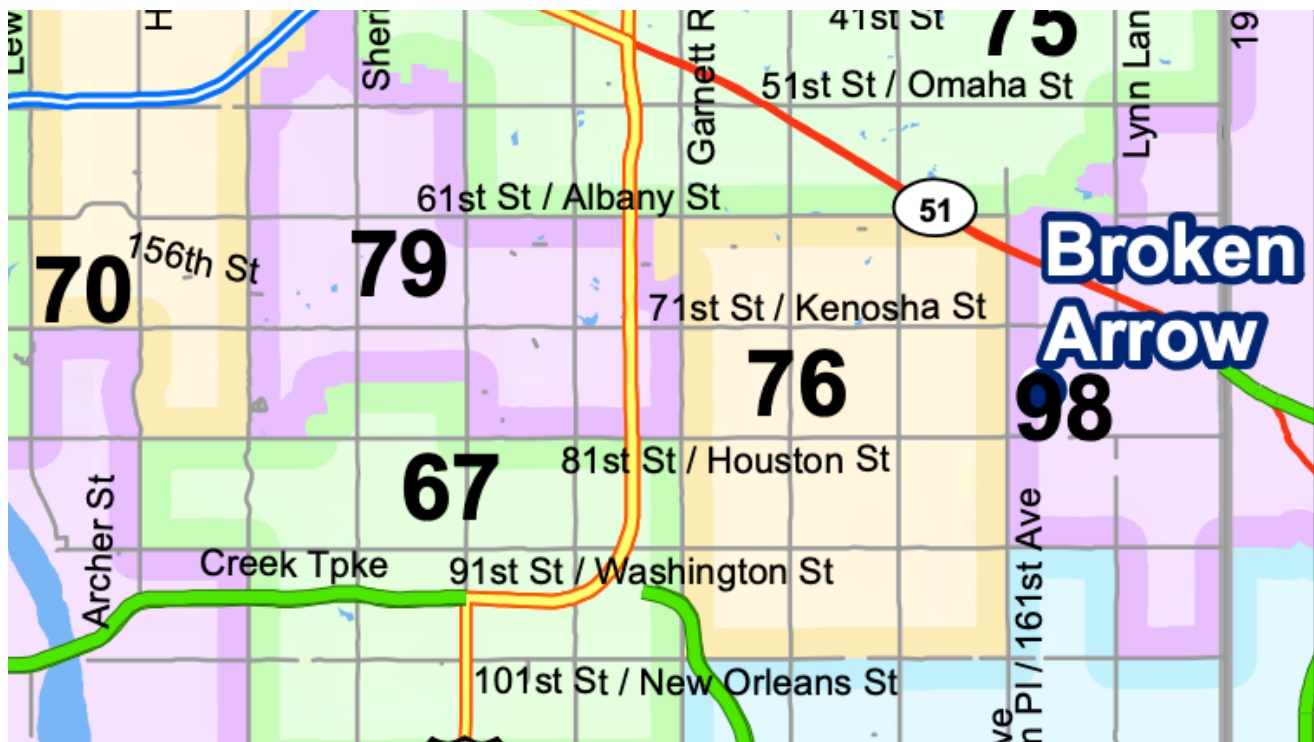
MEETING WITH LEGISLATORS

When you arrive at legislator offices, you will be greeted by their legislative assistant. Remember, they are the gatekeepers. Be polite with them and it could increase your chances of getting an unscheduled meeting or get your message passed along. It helps if you've already reached out. If you're meeting in the legislator's office, you will be invited in to their private office. When meeting with legislators, it is important to be professional, polite and to know your facts. If you don't know something, do not speculate. Let them know you can get back in touch with them with more information. Address them as "Representative X" or "Senator X" not by their first names.

As you share information with them, here are suggested items:

- Introduce yourself as well as if you're a constituent
- If your business is located in their district share this and any other relevant information.
- Legislators may not be familiar with your item so be sure to succinctly explain the issue (and share the bill number if available).
- Make a specific request (please oppose or please support; please keep our position in mind, etc.)
- When you leave, thank them for their time and consider inviting them to tour your business (or you can have chamber staff facilitate this)
- Follow up afterward with an email thanking for their time and sharing any information they've requested or you said you'd share

During the conversation, remember to not become confrontational or threatening with the member or staff. Take notes after your meeting so you can keep track of your conversations. If you are at the capitol by yourself, consider letting chamber staff know about your visit so that we can track it internally.



BROKEN ARROW LEGISLATORS & OFFICIALS

Statewide Officials



Gov. Kevin Stitt
Republican



Lt. Gov. Matt Pinnell
Republican

Other Officeholders

- State Auditor and Inspector Cindy Byrd (R)
- Attorney General Gentner Drummond (R)
- Treasurer Todd Russ (R)
- State Superintendent of Public Instruction Ryan Walters (R)
- Commissioner of Labor Leslie Osborn (R)
- Insurance Commissioner Glen Mulready (R)
- Corporation Commissioner Bob Anthony (R)
- Corporation Commissioner Todd Hiett (R)
- Corporation Commissioner Kim David (R)

Oklahoma State Senate



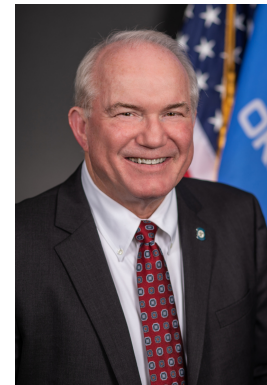
Sen. Blake Stephens
R-3



Sen. Joe Newhouse
R-25



Sen. Nathan Dahm
R-33



Sen. John Haste
R-36

Oklahoma State House of Representatives



Rep. Jeff Boatman
R-67



Rep. TJ Marti
R-75



Rep. Ross Ford
R-76

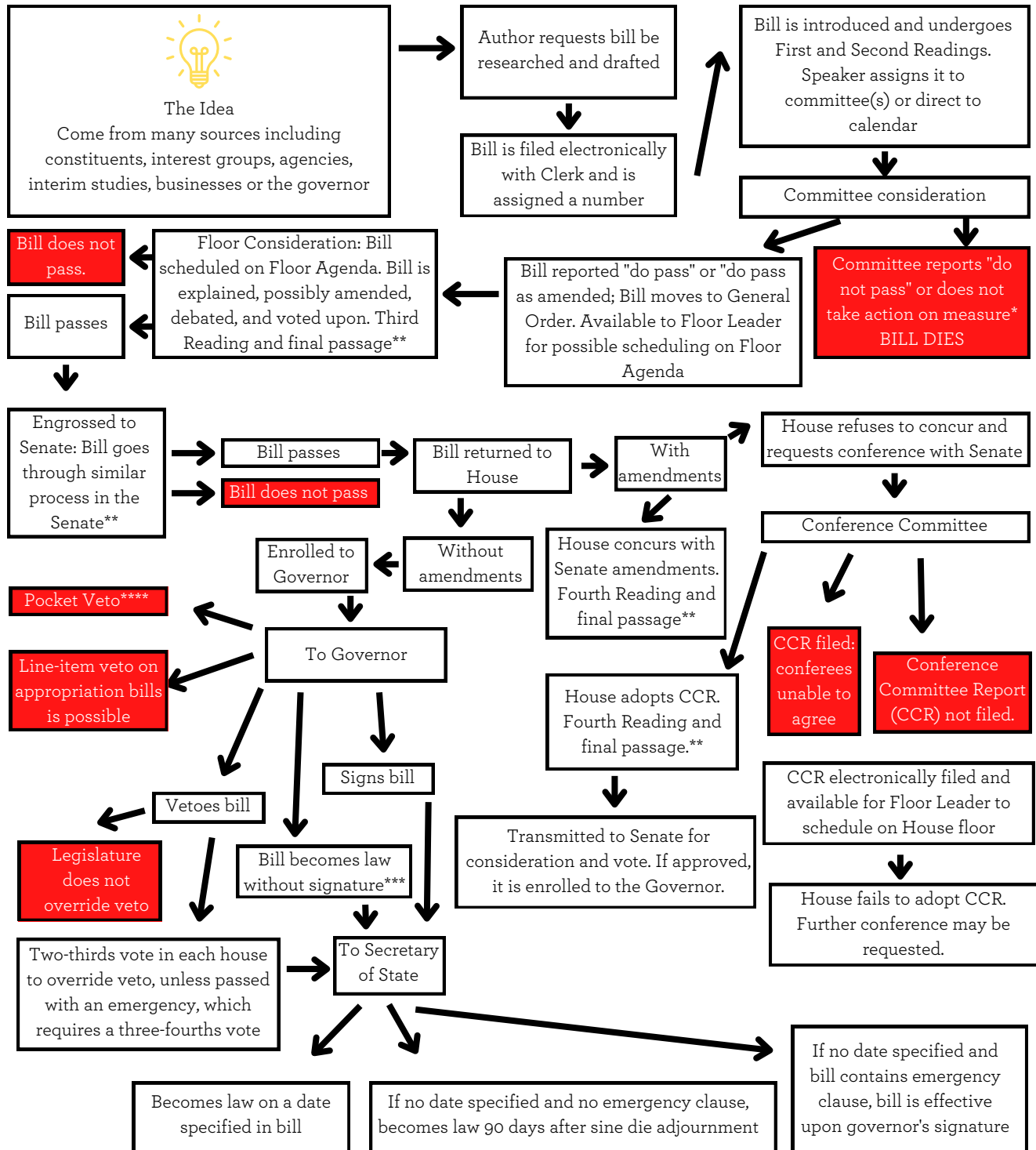


Rep. Stan May
R-80



Rep. Dean Davis
R-98

THE LEGISLATIVE PROCESS



* Under certain conditions, failure of a measure will prohibit another bill having the same effect and subject from being considered by the House during either session of the current legislatures

** Final passage in the House normally requires 51 votes; 68 votes to adopt emergency clauses. Vote requirement in the Senate is 25 (33 to adopt an emergency clause)

***Except during the last five days of session, the Governor has five days to take action on a bill. If no action is taken, the bill becomes law on its effective date

**** No bill may become law after the final adjournment of the Legislature unless signed by the Governor within 15 days after adjournment



BROKEN  **ARROW**
CHAMBER of COMMERCE

bachamber.com

918.893.2100